

Art Whirl
Art lovers can forget that trip to New York. They'll find plenty to do in the Bay Area this week. Art critic Merum Dungan says about 15 in today's Entertainment Week section.

Oakland Tribune
ESTABLISHED FEBRUARY 21, 1846 OAKLAND, CALIFORNIA

HOME EDITION

93rd YEAR, NO. 100 SC OAKLAND TRIBUNE SUNDAY, APRIL 10, 1966 25¢ SUNDAY, \$2.25 A MONTH

"Alive for Evermore"

Christian Rites Usher In Easter

Compiled from AP and UPI
The bells of Rome's 68 churches echoed across the city today, tolling the present Christian joy of Christ risen to Easter.
Their ringing chimes filled the streets as thousands flocked to celebrate the major feastday.
Elsewhere, sunrise services, fashion parades and a beach-bomb parade in St. Ignace marked the celebration of Easter Sunday.
Millions will have attended dawn sunrise services in what the weather bureau predicted would be chilly weather across much of the United States.
In Jerusalem, dove greetings in the traditional response "He is truly risen" echoed in the cavernous old Church of the Holy Sepulcher. They replaced screams, shouts and fist fights of Holy Saturday.
Judges had to force a crowd around Christ's tomb Saturday to hold back 10,000 worshippers whose religious fervor turned to near hysteria at a holy fire ceremony.
But all was quiet at midnight as pilgrims of the five Eastern and Western sects who share Confined Page A, Col. 4

Jettiner Ruins Off Oakland Airport Strip

United Airlines Boeing 720 jettiner carrying only its crew of seven and an infant passenger dived and dented 30 passengers.
None of the four-engine plane's occupants was hurt as it shot off the 10,000-foot runway at about 100 miles an hour.
The crash plowed along about 100 feet from the concrete strip and its landing gear sank into gully soil where about 22 of its 30 seats had fallen over the past 24 hours.
United Capt. W. C. Lafferty of San Francisco said he did not know the cause of the steering failure.
The off-duty stewardess was identified as Miss N. J. Ljundahl, also of San Francisco. United officials said they would attempt to extricate the plane today.

Navy Plans Crashes; 11 Aboard

SAN DIEGO — A Navy patrol plane from Moffett Field crashed Saturday night off Baja California with 11 men on board during anti-submarine exercises.
A Navy spokesman said there was no trace of search survivors.
A massive sea and air search was launched immediately in the crash area 22 miles south-west of Oceanside Island, about 100 miles south of San Diego.
The plane, a P-3 Orion, was on a mission to search for the submarine USS Blackout out of San Diego.
The crashing officer aboard the submarine said the plane crashed into the water at 7:25 p.m. All available Navy and Coast Guard search aircraft were called from San Diego.
The Seahawk remained at the scene. The destroyer USS Lyman S. Benson steamed from San Diego, and was expected to reach the search area shortly before dawn this morning.
Amphibious search planes circled the scene dropping flares. Pilots reported they were unable to find any debris.
The Navy said the weather was overcast, with 8-to-10 mile visibility up to 20 miles.
The names of those on board the plane were withheld pending notification of next of kin.

WEATHER
BAY AREA — Cloudy today, tonight and tomorrow with chance of showers to-morrow. High today near 60. Wind in Southwest winds 10 to 20 m.p.h.

Long Wait Near End For South Bay Span

By DAVE HOPE
The 20-year wait for an Army-Navy Board of Engineers professional recommendations for solution of the transbay traffic congestion problem.
It proposed a new Southern Crossing between San Francisco and Alameda, and called for an electric train system connecting the downtown areas of Oakland and San Francisco through an underwater tube.
It has taken a long, long time, but last Monday the California Toll Bridge Authority approved plans for a new bridge from San Francisco to Alameda. And next Friday the Bay Area Bay-Dredging District will conduct ceremonies on a vessel in the center of the Bay to mark commencement of construction of

12 S.F. Families Routed in Blaze

Twelve families were evacuated last night as a two-alarm fire of undetermined origin broke out in series of flats in the 300 block of Napa Street, San Francisco.
At the height of the fire, 45 pieces of equipment and 175 items were on hand in the flats which housed 300 feet into the air from the wood frame structures.
Although several buildings were almost only the three four stories at 802 Napa Street was occupied. There were about 20 people in the 12 units.
Owner Teresa Dealy said the apartments were in the process of being remodeled.
Napa Street is a narrow street running parallel between Mission and Howard Streets.
The alarm was sounded about 11 p.m.

Judy Williamson's Body Found in Hills

Monks Ask Ouster of Ky Junta

By EDWIN G. WHITE
SALOON, South Viet Nam (AP) — Buddhist leaders asked Saturday night in a demand for quick implementation of Premier Nguyen Cao Ky's military government with a civilian regime, they showed their power by stopping cold riotous demonstrations that had racked Saigon for a week.
Moderates and conservatives joined in a call for "an elected congress in a very short time, a platform where the people can speak about the sovereignty of their nation." No date was specified.
Speakers previously have urged that Ky's plan for a National Assembly election in 1967 be executed within two to five months.
The hierarchy of the faith protested by most Vietnamese supported in a proclamation to "all the people wishing to show their opposition to the government" content holding to their position, adding "we will dictate the time and the place."
Building up toward protests of a type that toppled the government of President Ngo Dinh Diem in 1960 and Premier Nguyen Khanh in 1963, the leaders announced the formation of an action committee called the Viet Nam Buddhist Forum.
Headed the committee are Thich Thien Minh, director of youth affairs.
Events of war and politics mingled elsewhere.
Haitianing activities was a 500 strike that stilled a Viet Cong communication center in the D Zone angle 35 miles northwest of Saigon.
The strike was organized to rig to carry up to 40,000 tons of supplies to the Viet jets attacked in the north or men in the formation night raid, used in high-level saturation bombing.
Though Saigon streets were calm for a change, there was an anti-evangelist demonstration by about 500 students at what a mountain resort, 100 miles northeast of Saigon. Vietnamese rangers broke it up, using tear gas and firing shots into the air.
More than 700 foreigners, American civilians and air-day military personnel, drove quarters at U.S. Navy and Marine installations in the San Diego area after being removed from the city itself as a precaution. Navy river boats and Marine helicopters landed the evacuees.
More than 700 foreigners, American civilians and air-day military personnel, drove quarters at U.S. Navy and Marine installations in the San Diego area after being removed from the city itself as a precaution. Navy river boats and Marine helicopters landed the evacuees.

JUDY WILLIAMSON: THE LAST HOPE ENDED
Her bones and clothing found in isolated ravine.

Parents on Trip, Not Aware of Discovery

By GENE AYRES
The parents of Judy Williamson were on a ranching trip in Europe and friends and Albany officials have no idea where they are.
They left April 1, knowing only that their daughter had been missing almost 3 1/2 years.
Albany Police Chief Ralph Jones Saturday night phoned calls with an overseas operator to the Albany American in Rome.
END TO WAITING
If they can locate the Williamson's it will be his job to get whoever doubts they may still have had their skeleton but Mrs. Williamson said she was found Thursday in the mountains north of Santa Cruz.
Vicki Hohl, who operates Travel Service Inc. in the El Centro Plaza said she said the Williamson travel tickets for a \$1,100 three-day tour, including round-trip air fare to Brussels and a European, good all over Europe.
"There's no way to find them," Hohl said. Bodies travel if they need no other arrangements, he added.
"I think they were just going to play it by ear," said a close friend.
Continued Page A, Col. 1

JUDY'S WATCH
Found with remains

Murder Clue Hunt Underway

By JEFF MORGAN
A search which began 2 1/2 years ago in Albany has ended in a brush-covered ravine in the wild, rugged Santa Cruz Mountains.
The skeleton of U.C. and Judy Williamson, who vanished on her way to the campus Oct. 23, 1963, was found by four hikers near State Highway 8 about 15 miles north of Santa Cruz.
It is presumed she was murdered. The cause of death could not be determined immediately.
The skeleton was definitely identified Saturday by Judy's dentist, who examined the teeth in the field.
Although pathological tests on the bones had not been completed, Albany Police Chief Ralph Jones said the body could have been in the ravine more than two years.
NOT NOTIFIED
The girl's parents, Mr. and Mrs. Stanley Williamson, of 652 Jackson St., Albany, had not learned of the discovery by late Saturday.
The Williamson left last week for a 10-week tour of Europe.
They just wanted to get away from the house and "not know," Jones said. "We haven't been able to find them. The think they're in France."
The investigation which Jones's department has been carrying on since the disappearance has shifted from Albany to the Sheriff's Office in Santa Cruz.
FINDS SKELETON
The skeleton was found by Harold Crafton, 25, of Soguel, and Edward Breen, 28, and said W. Hester, 25, and Robert A. Cox, 25, all of Santa Cruz. They were hunting for Redwood birds — used as nest material and commercially for decorative purposes.
The men were at the bottom of a steep ravine about 100 yards off Highway 8 when they spotted what appeared to be an abandoned car near the road. They started a climb toward it when they saw the skeleton.
The four men put out of the ravine into a wash, down to Glen Hieber near Ben Lennett and called Sheriff's officers.
BONES SCATTERED
Santa Cruz County Sheriff David G. E. Jones said the bones had been partially reburied, apparently by animals.
All of the clothes the girl was wearing the day she disappeared, with the exception of her nylon bra and black shoes, were found at the scene.
Also missing was a pearl and diamond ring which she had been wearing on her right hand, and her straw hat.
Judy's gold wristwatch and her small U.C. Masonic Club pin were found on the skeleton. The latter, watchband slat matched exactly the magenta, black and green gold Judy was wearing when she vanished.
A small, three-tooth stainless steel parking knife was found nearby. The steel and rail found handle carried no fingerprints.
JAMES KNICKED
Jones said the brassbone and rim of the skeleton contained some small bones and indentations, but it was not determined whether they were caused by knife blows or the teeth of carnivorous animals.
Deputies were to return to the scene again today to sift the earth around where the skeleton was discovered.
The remains were taken to Santa Cruz, where they were tentatively identified from bullet-

Clouds Won't Let Go of Rain Today

The skies will be overcast today, but you can get an Easter flurry and sally forth without an umbrella.
The weather bureau offers assurance to Bay Area residents that it won't rain today. But the clouds may linger and produce rain again tomorrow.
A touch of an inch fell in downtown Oakland Saturday afternoon, incorporating last-minute shoppers for chocolate eggs, clothing, accessories and maybe one ham or two.
Both Oakland and San Francisco recorded highs of 62 degrees and the temperature is expected to reach around that level today.
For those who would like some sunshine to accompany the spring breeze of their clothing, though, could be scarce. Snow was predicted for northern areas in the Midwest and east and for the Pacific Northwest the outlook was for heavy rain.

INDEX ON PAGE A

https://www.newspapers.com/image/38914268

Tragic Discovery Ends Lost Coed Search



Weathered label identified tailor-made skirt Judy was wearing when she disappeared

Body of Judy Williamson Found in Coastal Ravine

Continued from Page 1
The discovery of Judy Williamson's body in a coastal ravine near Berkeley, Calif., Sunday, ended a search for the missing 21-year-old woman that had lasted for nearly two weeks.

CAR CLUE TRACKED
The search for Judy Williamson's car was traced through its registration to Fred Russell of Santa Clara County.

Judy was unable to say how long it would take to complete a psychological and chemical tests of the remains.

PROBE REVIVED
Jensen said the discovery of the skeleton will likely revive the investigation.

Judy disappeared somewhere between her home and the corner of San Pablo and Portland Avenues, where she normally caught the bus which had her to the U.C. campus in Berkeley.

BAY AREA SHOCKED
The regional and local news wide hunt for her stretched out a wave of public interest which rocked the Bay Area for weeks.

MASSIVE SEARCH
The first clue came Friday, Nov. 1, 1965, when it was reported that two students at the U.C. Botanical Gardens.

MANY REPORTS
Spontaneous witness reports were reported within her on San Pablo Ave. about the time she was believed to have been last seen.

SEARCHING FOR
The search for Judy Williamson's car was traced through its registration to Fred Russell of Santa Clara County.

SEARCHING FOR
The search for Judy Williamson's car was traced through its registration to Fred Russell of Santa Clara County.

SEARCHING FOR
The search for Judy Williamson's car was traced through its registration to Fred Russell of Santa Clara County.

SEARCHING FOR
The search for Judy Williamson's car was traced through its registration to Fred Russell of Santa Clara County.

SEARCHING FOR
The search for Judy Williamson's car was traced through its registration to Fred Russell of Santa Clara County.

SEARCHING FOR
The search for Judy Williamson's car was traced through its registration to Fred Russell of Santa Clara County.

4 Discover Skeleton By Chance



SANTA CRUZ SHERIFF MATCHES FABRIC
Douglas B. James shows that skirt was Judy's

4 Discover Skeleton By Chance
The bones were found in a ravine just off State Highway 8, about a mile north of Boulder Creek, where Sheriff Douglas B. James said he was searching for redwood lumber for commercial sale.

WIVES GOORBY
Judy was out of the house at 7:30 on the night she disappeared.

SEARCHING FOR
The search for Judy Williamson's car was traced through its registration to Fred Russell of Santa Clara County.

SEARCHING FOR
The search for Judy Williamson's car was traced through its registration to Fred Russell of Santa Clara County.

SEARCHING FOR
The search for Judy Williamson's car was traced through its registration to Fred Russell of Santa Clara County.

SEARCHING FOR
The search for Judy Williamson's car was traced through its registration to Fred Russell of Santa Clara County.

SEARCHING FOR
The search for Judy Williamson's car was traced through its registration to Fred Russell of Santa Clara County.

SEARCHING FOR
The search for Judy Williamson's car was traced through its registration to Fred Russell of Santa Clara County.

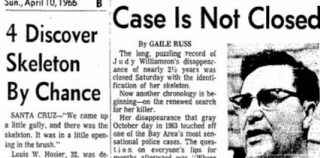
SEARCHING FOR
The search for Judy Williamson's car was traced through its registration to Fred Russell of Santa Clara County.

SEARCHING FOR
The search for Judy Williamson's car was traced through its registration to Fred Russell of Santa Clara County.

SEARCHING FOR
The search for Judy Williamson's car was traced through its registration to Fred Russell of Santa Clara County.

SEARCHING FOR
The search for Judy Williamson's car was traced through its registration to Fred Russell of Santa Clara County.

Riddle Solved But Case Is Not Closed



THE HUNTER — Alameda County Sheriff Ralph Jensen says reports details on disappearance of Judy Williamson's car.

Riddle Solved But Case Is Not Closed
The long, puzzling record of Judy Williamson's disappearance of nearly 21 years was closed Saturday with the identification of her skeleton.

SEARCHING FOR
The search for Judy Williamson's car was traced through its registration to Fred Russell of Santa Clara County.

SEARCHING FOR
The search for Judy Williamson's car was traced through its registration to Fred Russell of Santa Clara County.

SEARCHING FOR
The search for Judy Williamson's car was traced through its registration to Fred Russell of Santa Clara County.

SEARCHING FOR
The search for Judy Williamson's car was traced through its registration to Fred Russell of Santa Clara County.

SEARCHING FOR
The search for Judy Williamson's car was traced through its registration to Fred Russell of Santa Clara County.

SEARCHING FOR
The search for Judy Williamson's car was traced through its registration to Fred Russell of Santa Clara County.

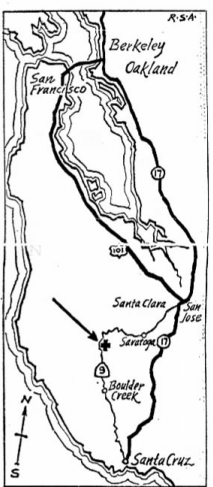
SEARCHING FOR
The search for Judy Williamson's car was traced through its registration to Fred Russell of Santa Clara County.

SEARCHING FOR
The search for Judy Williamson's car was traced through its registration to Fred Russell of Santa Clara County.

SEARCHING FOR
The search for Judy Williamson's car was traced through its registration to Fred Russell of Santa Clara County.

SEARCHING FOR
The search for Judy Williamson's car was traced through its registration to Fred Russell of Santa Clara County.

SEARCHING FOR
The search for Judy Williamson's car was traced through its registration to Fred Russell of Santa Clara County.



WILD RAVINE HIDES COED'S FATE 2 1/2 YEARS
Judy Williamson's skeleton found here (-)

SEARCHING FOR
The search for Judy Williamson's car was traced through its registration to Fred Russell of Santa Clara County.

SEARCHING FOR
The search for Judy Williamson's car was traced through its registration to Fred Russell of Santa Clara County.

SEARCHING FOR
The search for Judy Williamson's car was traced through its registration to Fred Russell of Santa Clara County.

SEARCHING FOR
The search for Judy Williamson's car was traced through its registration to Fred Russell of Santa Clara County.

SEARCHING FOR
The search for Judy Williamson's car was traced through its registration to Fred Russell of Santa Clara County.

SEARCHING FOR
The search for Judy Williamson's car was traced through its registration to Fred Russell of Santa Clara County.

SEARCHING FOR
The search for Judy Williamson's car was traced through its registration to Fred Russell of Santa Clara County.

SEARCHING FOR
The search for Judy Williamson's car was traced through its registration to Fred Russell of Santa Clara County.

Key Officers Not on Hand For Big News

Key Officers Not on Hand For Big News
The two men U.C. Botanical Gardens, where Judy Williamson disappeared, were not on hand when the body was found.

Cong Documents Show Scheme for Infiltration

Cong Documents Show Scheme for Infiltration
The documents show a plan to infiltrate the Bay Area government through the Communist Party.